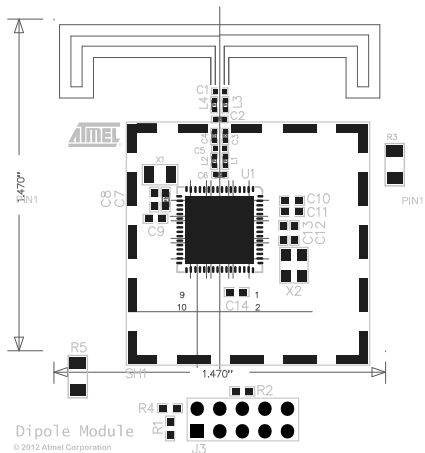


TOP SIDE ASSEMBLY NOTES:

1. THE FOLLOWING COMPONENTS CAN BE POPULATED IN EITHER ORIENTATION:
ALL RESISTORS AND NON-POLARIZED CAPACITORS CRYSTAL X2
CONNECTOR J1 RF SHIELD SHD1
2. WATCH FOR POLARITY OR ORIENTATION MARKINGS ON THE FOLLOWING COMPONENTS:
INDUCTORS L1-L4 INTEGRATED CIRCUIT U1
3. FINISHED ASSEMBLY NEEDS TO BE RoHS COMPLIANT.
4. POPULATE CRYSTAL X1 (BOTTOM SIDE) OR X2 (TOP SIDE) BUT NOT BOTH.



TOP SILKSCREEN

TOP SIDE ASSEMBLY NOTES:

1. THE FOLLOWING COMPONENTS CAN BE POPULATED IN EITHER ORIENTATION:
ALL RESISTORS AND NON-POLARIZED CAPACITORS CRYSTAL X2
CONNECTOR J1 RF SHIELD SHD1
2. WATCH FOR POLARITY OR ORIENTATION MARKINGS ON THE FOLLOWING COMPONENTS:
INDUCTORS L1-L4 INTEGRATED CIRCUIT U1
3. FINISHED ASSEMBLY NEEDS TO BE RoHS COMPLIANT.
4. POPULATE CRYSTAL X1 (BOTTOM SIDE) OR X2 (TOP SIDE) BUT NOT BOTH.

